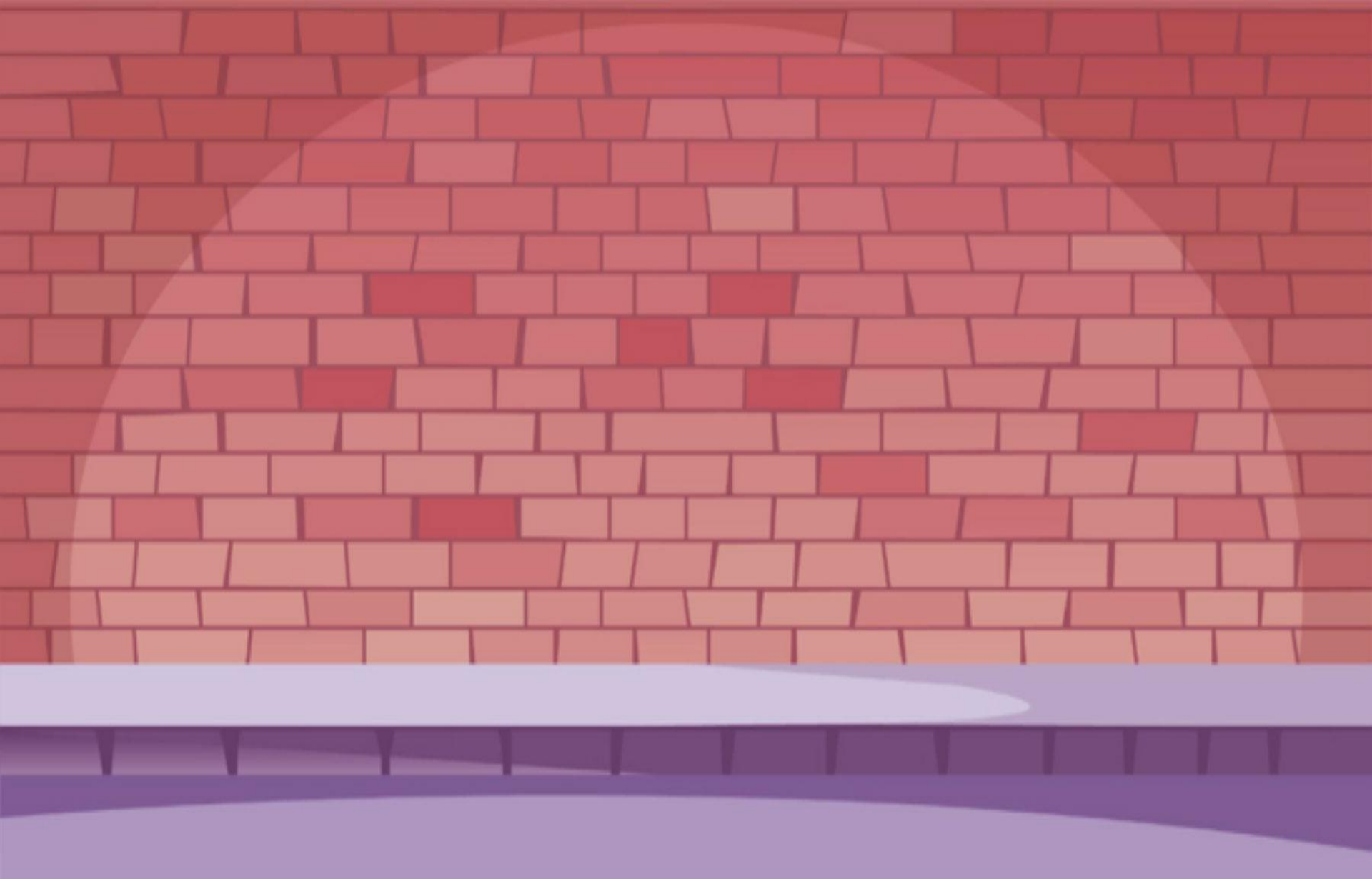


# Imagining the class of 2015

How can Google Nexus 7 inch tablets be used in the classroom?  
Feb – May 2012

**Presented by Natalie Denmeade @moodlemuse**



**This is what we imagine the future will be like ...**



**Learners each bring their own device and 4G Internet**



**Google Nexus 7 inch tablet \$249**



**Learning happens any place anytime**





**Voice and Video recordings are part of assessment**



**Learners and Teachers are comfortable with Digital Media**

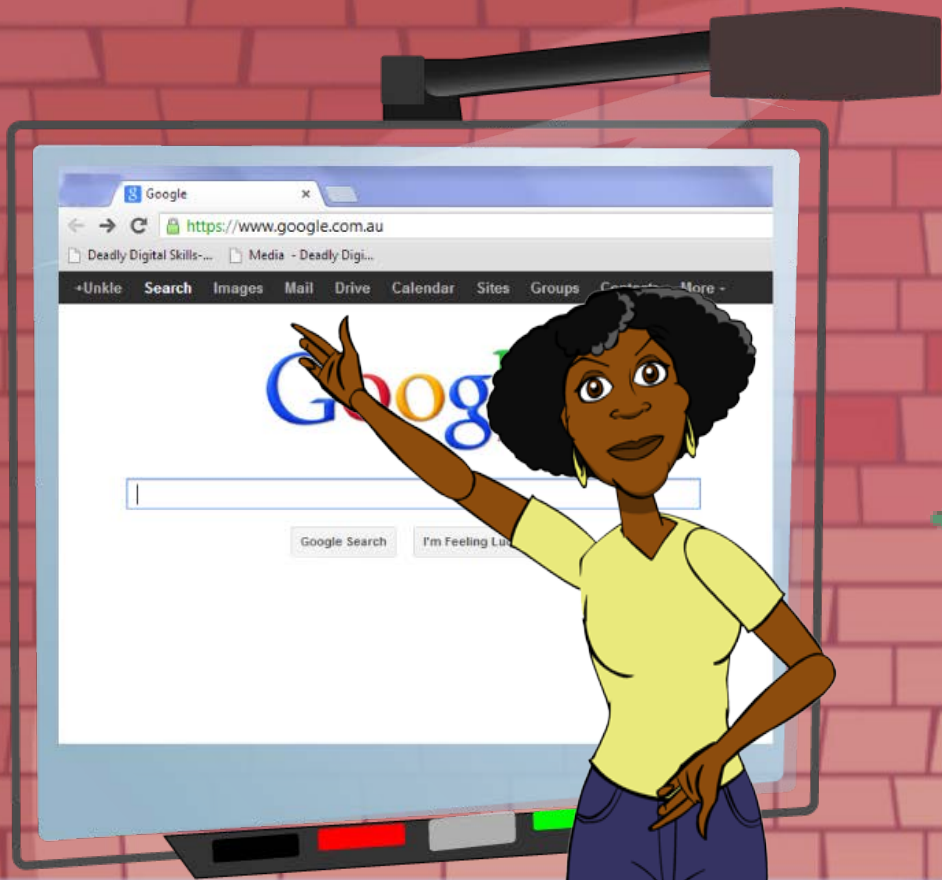


**Single sign on gives access to all of resources**

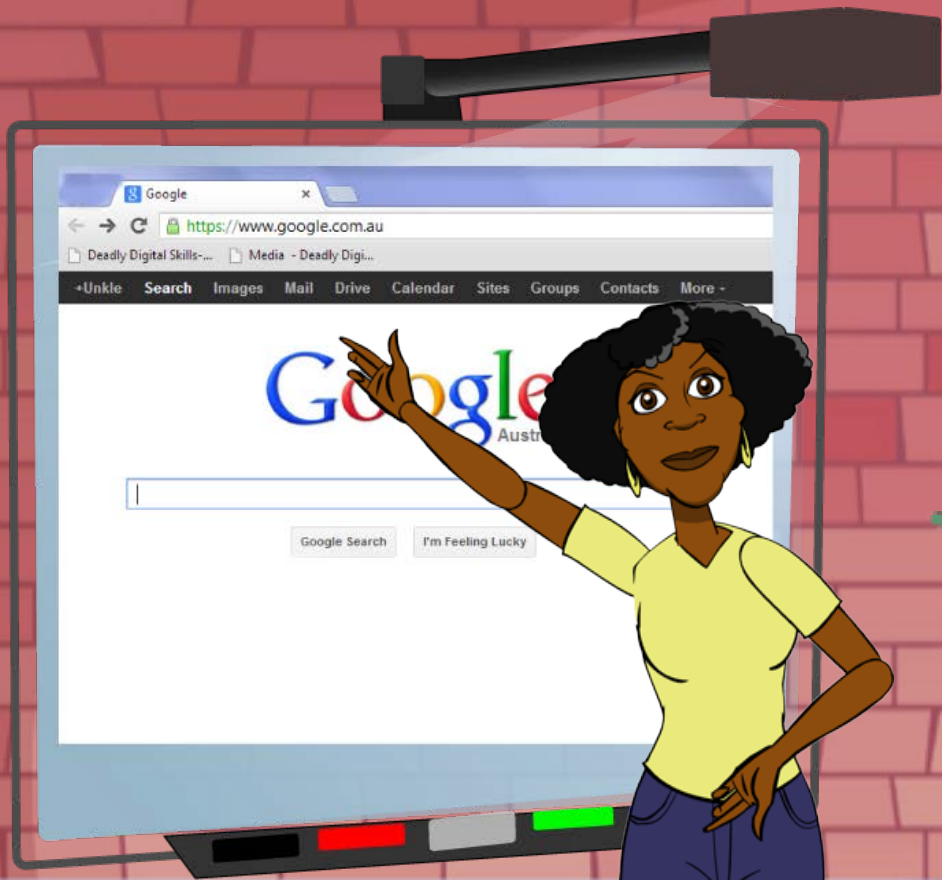




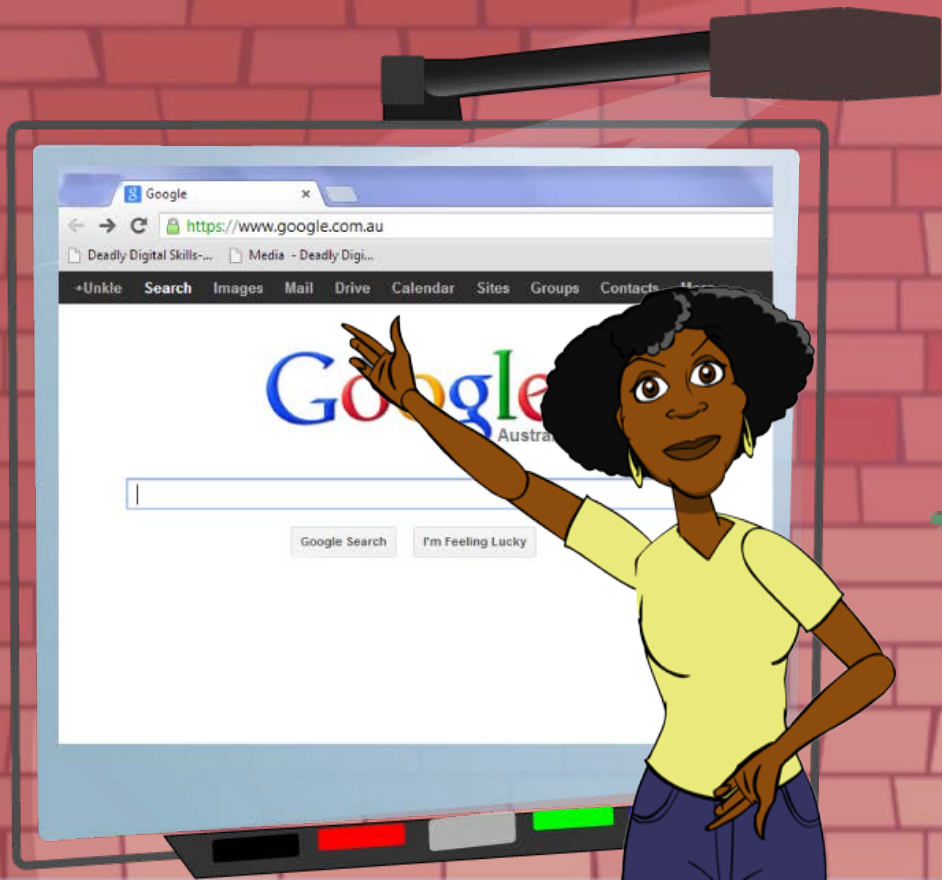
**Jay signs in to Google**



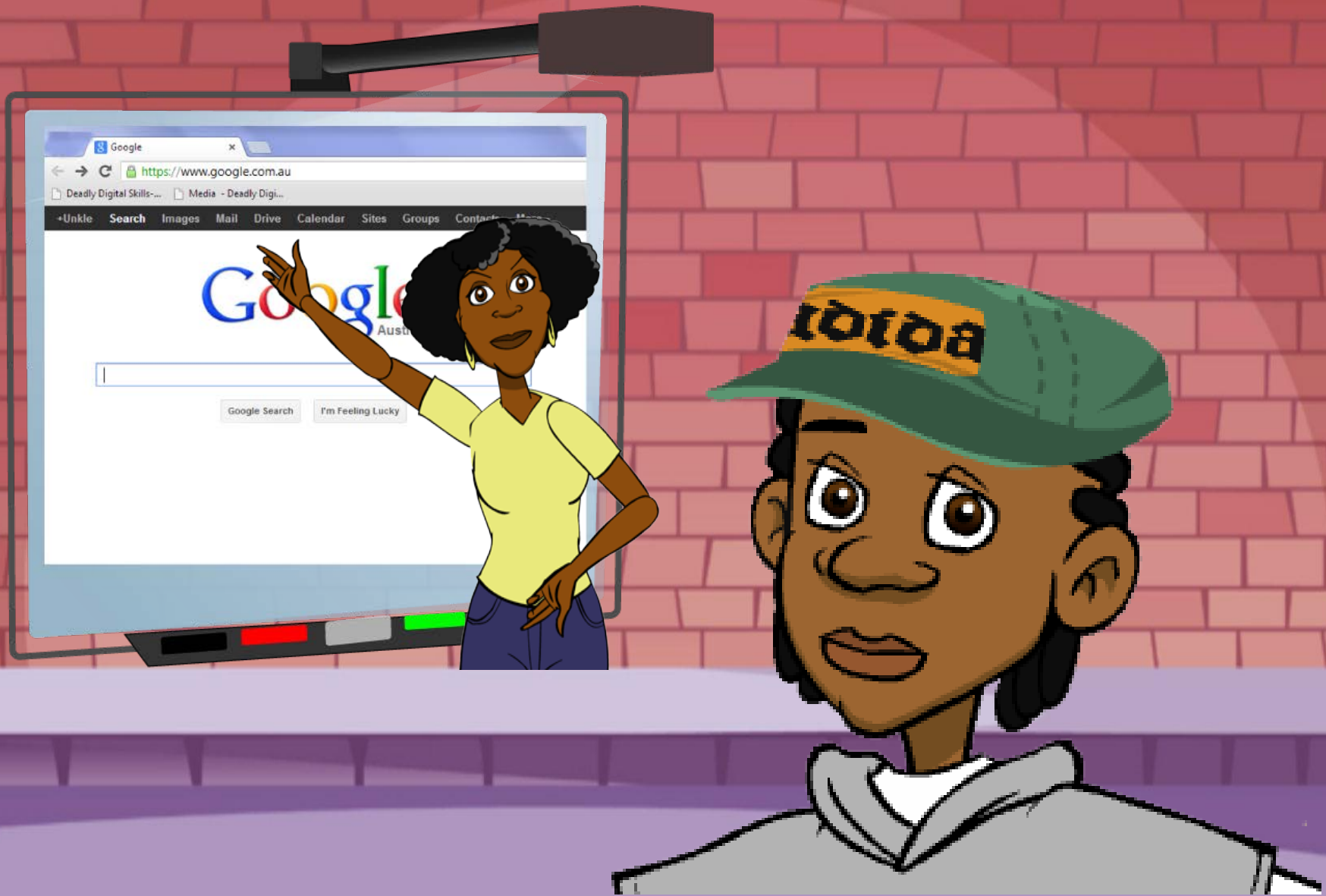
**Jay checks his email**



**Jay can make and share drawings, docs and spreadsheets. No more lost homework!**



**Jay has access to class files in Google Drive from any computer**



**Jay's Teacher can support him through the learning process with comments and collaboration.**





**Jay can publish his work on the Internet**

## Issues

- OHS with smaller screens
- Harder to monitor who is on track
- Multiple users signing out and using correct logon (privacy issues)
- Authority to Publish
- Charging 10 computers

## Benefits

- Learners loved the devices “I want one”
- Equitable solution to a minimum expectation of computing device
- Introduces multimedia into assessment easily
- Replaces so many other educational tools
- Cloud based file and Apps easily accessed and shared via USB etc

**Insights gained from the trial with learner groups**

- Set up a default account and add the Google Device Management App. This allows remote wiping and additional tools through GAFE interface. Password protect this account
- Add multiple users per device to maintain privacy and accountability
- IN GAFE set access to services required, make sub groups to restrict access further
- Set up groups to manage users and communicate
- A package is available to install desktop shortcuts to Google Drive, Email, and Calendar

## **Admin Tips to manage Nexus 7 Tablets**

Browser tabs: TAFE - Google Drive, Class of 2015 - Google Drive, Google Apps

Address bar: <https://www.google.com/a/cpanel/deadlyskills.org/CPanelHome#ServiceSettings/service=mobile&subtab=devices>

Search: Images Mail Drive Calendar Sites Groups Contacts More

Google Apps for deadlyskills.org - Google Apps for Education

Search accounts Search Help Center

Navigation: Dashboard Users Groups Domain settings Reports Advanced tools Setup Support Settings

System

Security

Services

Calendar

Chrome Management

Contacts

Drive

Gmail

Google+

**Mobile**

Sites

Talk

Video

### Mobile settings

Org Settings Activation **Devices**

Search Approve Block Remote Wipe Delete Export All ?

<input type="checkbox"/>	Device ID	Name ▲	Email	Model	OS	Type	Last Sync
<input type="checkbox"/>	<a href="#">3a2d..557a88</a>	<a href="#">Dean Deadly</a>	dean@deadlyskills.org	Nexus 7	Android 4.2.1	Android	4/19/13
<input type="checkbox"/>	<a href="#">3dbe...0ede4c</a>	<a href="#">Tabalet Twodeadly</a>	tablet2@deadlyskills.org	Nexus 7	Android 4.2.1	Android	4/29/13
<input type="checkbox"/>	<a href="#">3ecf..3d715d</a>	<a href="#">Tablet Four</a>	tablet4@deadlyskills.org	Nexus 7	Android 4.2.1	Android	5/6/13
<input type="checkbox"/>	<a href="#">3337..31be93</a>	<a href="#">Tablet Nine</a>	tablet9@deadlyskills.org	Nexus 7	Android 4.2.1	Android	5/6/13
<input type="checkbox"/>	<a href="#">38ea..641fda</a>	<a href="#">Tablet One</a>	tablet1@deadlyskills.org	Nexus 7	Android 4.2.1	Android	4/26/13
<input type="checkbox"/>	<a href="#">3d4b..fc837b</a>	<a href="#">Tablet Six</a>	tablet6@deadlyskills.org	Nexus 7	Android 4.2.1	Android	5/6/13
<input type="checkbox"/>	<a href="#">30db..658e4f</a>	<a href="#">Tablet Ten</a>	tablet10@deadlyskills.org	Nexus 7	Android 4.2.1	Android	5/3/13
<input type="checkbox"/>	<a href="#">3101..61614</a>	<a href="#">Tablet Eight</a>	tablet8@deadlyskills.org	Nexus 7	Android 4.2.1	Android	5/6/13

# Google Apps for Education Interface



Search accounts

Search Help Center

- Dashboard
- Users
- Groups
- Domain settings
- Reports
- Advanced tools
- Setup
- Support
- Settings
- Help ▾

- System
- Security
- Services
- Calendar**
- Chrome Management
- Contacts
- Drive
- Gmail
- Google+
- Mobile
- Sites
- Talk
- Video
- deadly-skills (App Engine)

## Calendar settings

- Org Settings
- General
- Resources

### External Sharing options for primary calendars

Locally applied

#### Outside Deadly Skills at North Coast TAFE NSW - set user ability for primary calendars

By default, primary calendars are not shared outside Deadly Skills at North Coast TAFE NSW . Select the highest level of sharing that you want to allow for your users.

- Only free/busy information (hide event details)
- Share all information, but outsiders cannot change calendars
- Share all information, and outsiders can change calendars
- Share all information, and allow managing of calendars

### Internal Sharing options

Locally applied

#### Within Deadly Skills at North Coast TAFE NSW - set default

Users will be able to change this default setting. Super Admins have 'Make changes and manage sharing' access to all calendars on the domain. [Learn more](#)

- No sharing
- Only free/busy information (hide event details)
- Share all information

### Calendar Labs

- Enable Calendar Labs for my users. [?](#)

# Google Apps for Education Interface



**These are personal devices best owned and managed by one person, or long term rental from a library. Mainly to avoid Institutional responsibility for content.**

**Recommend Chrome Books as a mobile classroom solution, slighter bigger and cost \$350, better management features for admins.**

**The question isn't tablet or desktop. Learners will be using both simultaneously. Not a replacement but an extension of our environment.**

**Google Drive and Apps for Education is a great solution to many requirements:**

- ✓ **Browser based works across all operating systems and devices.**
- ✓ **Responsive – fits on various sized screens**
- ✓ **Synchronises across devices**
- ✓ **Accessible – Read and Write available**
- ✓ **Easy to learn**
- ✓ **Teachers can leave comments on learner's work**
- ✓ **Download in various formats**
- ✓ **Files are easily shared**
- ✓ **Great Chrome web store apps eg WeVideo MindMup**
- ✓ **It's all free!**

**My Realisations**